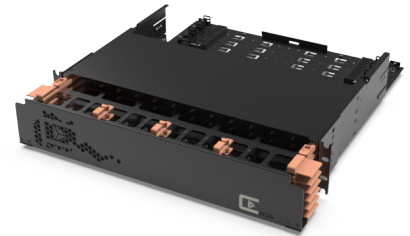


CONNEXISS Panel 2U

CONNEXISS High Density Fiber Patch Panel 2U with front cable management, sliding, black

CONNEXISS Panel is designed for holding CONNEXISS Cassettes - Preterminated, Adapter and Splicing.

- Any size Cassette can be used in any panel or blade
- Cassettes can be installed and removed from front or rear of panel
- Supports 8F, 12F, 16F, and 24F applications while maintaining full frontal panel port density
- Removable rear cable mounting organizer provide secure connecting for multiple trunk cables



SPECIFICATION

Hardware Type	Unloaded Modular Panel with 6 Sliding Blades for CONNEXISS cassettes
Max Port Capacity	144 x LC Duplex, MTP/MPO; 288 x VSSF
Number of Rack Spaces	2U
Module Capacity	CONNEXISS Cassettes per blade - 6 x C6, 4 x C4, 3 x C3, 2 x C2
Front Organizer	Adjustable rings on slidable blades, folding door
Rear Organizer	Removable, with adjustable cable holders, cable entry from 3 sides
Weight	8 kg
Material	Steel, aluminum, plastic
Colour	Black
Dimensions WxHxD	445 x 88,6 x 529,3 mm
Operating Temperature	-10 to 50°C
Storage Temperature	-20 to 60°C

Part Numbers

C3220000	CONNEXISS High Density Fiber Patch Panel 2U with front cable management, sliding, black
----------	---