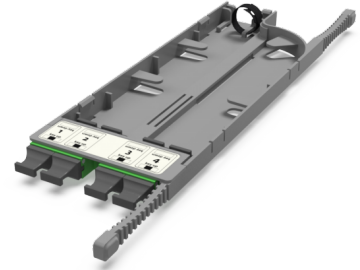


CONNEXISS MTP Adapter Cassette CA6 SM Type A

CA6 - Adapter cassette 4 x MTP adapters (green), SM, TIA type A (opposed key)

CONNEXISS MTP CA6 SM Adapter Cassette is a high-density fiber optic module that contains 4x MTP SM adapters on the front side for direct connection or patching to a preterminated cable assemblies from rear side. It is designed for installation in the CONNEXISS High Density Fiber Patch Panel.

Up to 6 cassettes CA6 can be installed per blade of the CONNEXISS Panel.



SPECIFICATION

Adapter Interface	MPO(8 12 24)
Adapter Ports Qty	4
Adapter Fiber Mode	SM
Adapter Colour	Green
Adapter Polarity	Type A (KeyUp-KeyDown)
Material	Plastic
Colour	Grey
Operating Temperature	-10 to 50°C
Storage Temperature	-20 to 60°C

Part Numbers

C4261100	CA6 - Adapter cassette 4 x MTP adapters (green), SM, TIA type A (opposed key)
----------	---