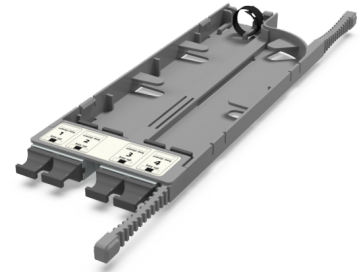


CONNEXISS MTP(16) Adapter Cassette CA6 MM Type A

CA6 - Adapter cassette 4 x MTP(16) adapters (white), MM, TIA type A (opposed key)

CONNEXISS MTP(16) CA6 MM Adapter Cassette is a high-density fiber optic module that contains 4x MTP(16) MM adapters on the front side for direct connection or patching to a preterminated cable assemblies from rear side. It is designed for installation in the CONNEXISS High Density Fiber Patch Panel.

Up to 6 cassettes CA6 can be installed per blade of the CONNEXISS Panel.



SPECIFICATION

Adapter Interface	MPO(16)
Adapter Ports Qty	4
Adapter Fiber Mode	MM
Adapter Colour	White
Adapter Polarity	Type A (KeyUp-KeyDown)
Material	Plastic
Colour	Grey
Operating Temperature	-10 to 50°C
Storage Temperature	-20 to 60°C

Part Numbers

C426L100	CA6 - Adapter cassette 4 x MTP(16) adapters (white), MM, TIA type A (opposed key)
----------	---