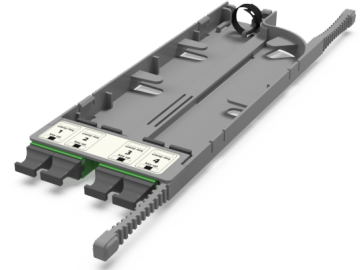


## CONNEXISS MTP(16) Adapter Cassette CA6 SM Type A

CA6 - Adapter cassette 4 x MTP(16) adapters (green), SM, TIA type A (opposed key)

CONNEXISS MTP(16) CA6 SM Adapter Cassette is a high-density fiber optic module that contains 4x MTP(16) SM adapters on the front side for direct connection or patching to a preterminated cable assemblies from rear side. It is designed for installation in the CONNEXISS High Density Fiber Patch Panel.

Up to 6 cassettes CA6 can be installed per blade of the CONNEXISS Panel.



### SPECIFICATION

Adapter Interface	MPO(16)
Adapter Ports Qty	4
Adapter Fiber Mode	SM
Adapter Colour	Green
Adapter Polarity	Type A (KeyUp-KeyDown)
Material	Plastic
Colour	Grey
Operating Temperature	-10 to 50°C
Storage Temperature	-20 to 60°C

### Part Numbers

C426N100	CA6 - Adapter cassette 4 x MTP(16) adapters (green), SM, TIA type A (opposed key)
----------	---