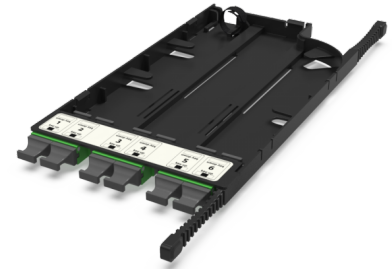


CONNEXISS MTP(16) Adapter Cassette CA4 SM Type A

CA4 - Adapter cassette 6 x MTP(16) adapters (green), SM, TIA type A (opposed key)

CONNEXISS MTP(16) CA4 SM Adapter Cassette is a high-density fiber optic module that contains 6x MTP(16) SM adapters on the front side for direct connection or patching to a preterminated cable assemblies from rear side. It is designed for installation in the CONNEXISS High Density Fiber Patch Panel.

Up to 4 cassettes CA4 can be installed per blade of the CONNEXISS Panel.



SPECIFICATION

Adapter Interface	MPO(16)
Adapter Ports Qty	6
Adapter Fiber Mode	SM
Adapter Colour	Green
Adapter Polarity	Type A (KeyUp-KeyDown)
Material	Plastic
Colour	Black
Operating Temperature	-10 to 50°C
Storage Temperature	-20 to 60°C

Part Numbers

C427N200	CA4 - Adapter cassette 6 x MTP(16) adapters (green), SM, TIA type A (opposed key)
----------	---